

Catalog No
M0009-01-HRP

Anti-human IgG Fc, HRP conjugated

Type
HRP-labelled Mouse
Monoclonal

Formulation
50mM Tris pH 8 with
stabilizers

Specificity and Species Reactivity

Recognizes the Fc fragment but not the Fab fragment of human IgG. Reactivity with immunoglobulins from other species not tested.

Applications

Western Blot analysis of human IgG fragments using Anti-human IgG Fc-HRP as probe is shown in Figure 1 below.

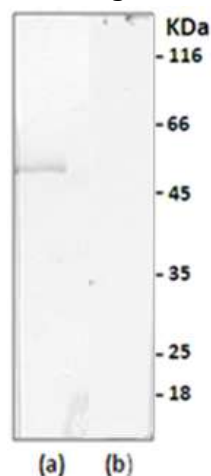


Figure 1: Western blot analysis of (a) human IgG and (b) human IgG Fab fragment with Anti-human IgG Fc-HRP.

Antigen: 500 ng of Human IgG Fab & Human IgG Fc,
Conjugated Antibody: 1:10,000 incubated for 1 hr,
Development by DAB/H₂O₂

Recommended dilution of this conjugate for **Direct ELISA** and **Sandwich ELISA** is 1:10,000 – 1:20,000.

About the Immunogen

Human IgG Fc fragment can be obtained by Papain digestion of human IgG followed by protein A purification. It contains the heavy chain of IgG linked by disulfide bond. Antibody against the Fc fragment is used for characterization of antibody-based therapeutic drugs.

Related Products

Anti-Human IgG Fc (Cat # M0009-01)